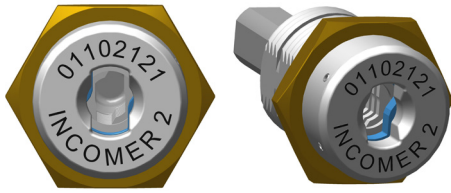


Switchgear Interlocking

Mini Basic Lock

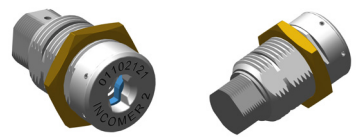
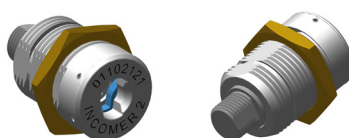
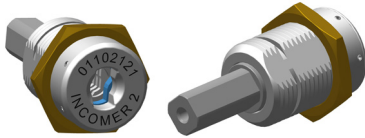


The SL Basic Lock is designed to lock switchgear in the open and/or closed position and can be adapted to suit switchgear by using manufacturers' fitting kits.

SL/SM- EC/EA-95

SL/SM- EC/EA-11

SL/SM- EC/EA-17



Mini Basic Lock

- Radial disc tumbler lock providing high strength and reliability in harsh environments (e.g. mining).
- Front face laser marked with code (up to 20 characters) and differ information, both controlled by Fortress database to ensure system and site integrity.
- Many character types available including Chinese.
- The key is freed in the 12 o'clock and 6 o'clock position.
- Once freed the SL key can integrate into a full size CL system.
- Clockwise and Anti-Clockwise movement available.
- Over 5,000 non-masterable combinations available.
- Over 5,000 masterable combinations available.

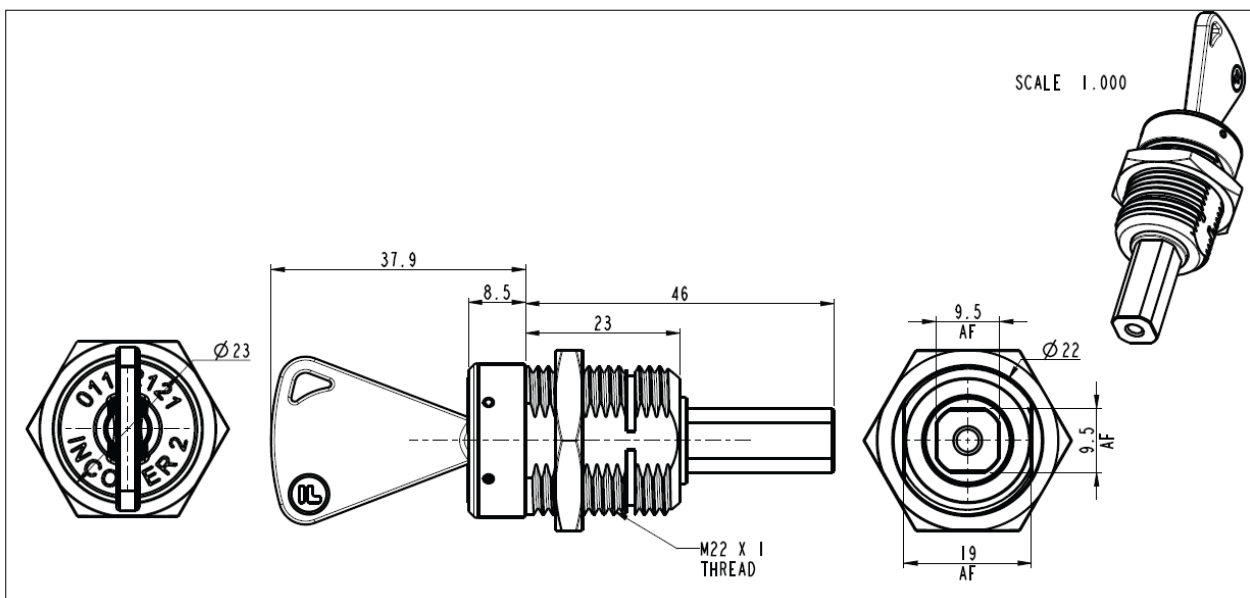
Technical Specification

Lock Construction	Zinc Alloy with a durable satin chrome finish to the lock casing.
Internal Lock Construction	Stainless Steel
B10d	5,000,000

Part No. / Ordering Information

Part No.	Master Series Part No.	Movement	Spindle Interface Size	Spindle Length
SL-EC95	SM-EC95	90° Clockwise	9.5SQ	22mm
SL-EA95	SM-EA95	90° Anti-Clockwise	9.5SQ	22mm
SL-EC11	SM-EC11	90° Clockwise	M11	9mm
SL-EA11	SM-EA11	90° Anti-Clockwise	M11	9mm
SL-EC17	SM-EA17	90° Clockwise	M17	9mm
SL-EA17	SM-EA17	90° Anti-Clockwise	M17	9mm

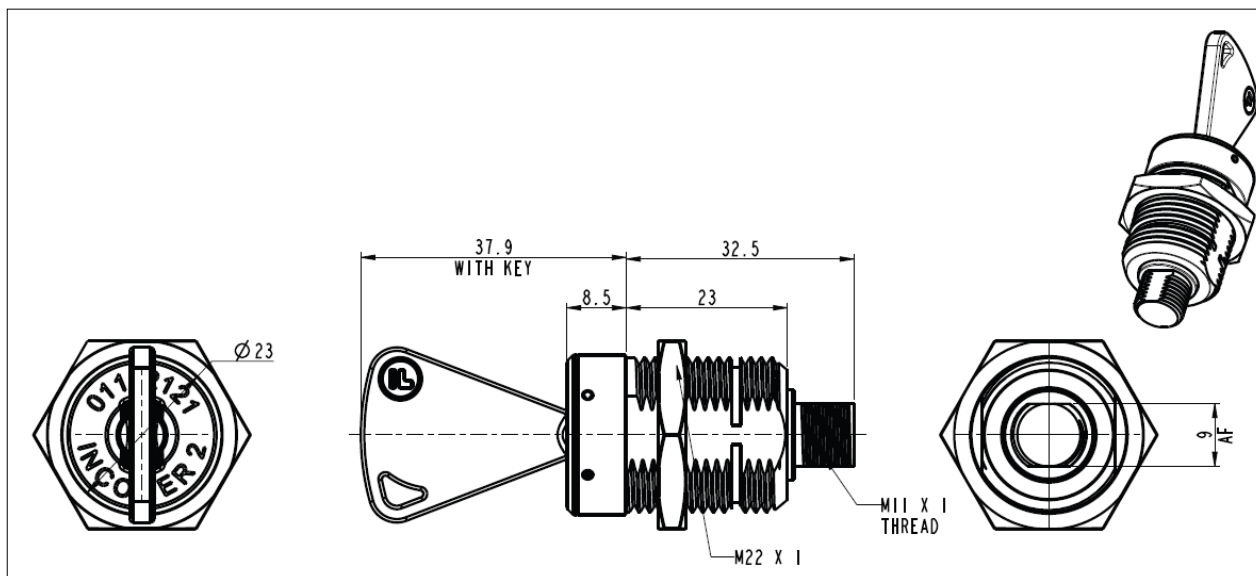
SL/SM - EC95



Switchgear Interlocking

Mini Basic Lock

SL/SM - EC11



SL/SM - EC17

